

Your Notes and Domino in the Cloud

ibmcloud.com/social



m@nl.ibm.com

IBM Connections Cloud

Maurice Teeuwe | Tech. Sales Lead, Europe

Please Note

IBM's statements regarding its plans, directions, and intent are subject to change or withdrawal without notice at IBM's sole discretion.

Information regarding potential future products is intended to outline our general product direction and it should not be relied on in making a purchasing decision.

The information mentioned regarding potential future products is not a commitment, promise, or legal obligation to deliver any material, code or functionality. Information about potential future products may not be incorporated into any contract. The development, release, and timing of any future features or functionality described for our products remains at our sole discretion

Performance is based on measurements and projections using standard IBM benchmarks in a controlled environment. The actual throughput or performance that any user will experience will vary depending upon many factors, including considerations such as the amount of multiprogramming in the user's job stream, the I/O configuration, the storage configuration, and the workload processed. Therefore, no assurance can be given that an individual user will achieve results similar to those stated here.

Agenda

- Messaging Migrations
 - Choices
 - Migrate on your own
 - Migrate with IBM or Business Partner
- Why don't you migrate your data in 2015?



Agenda

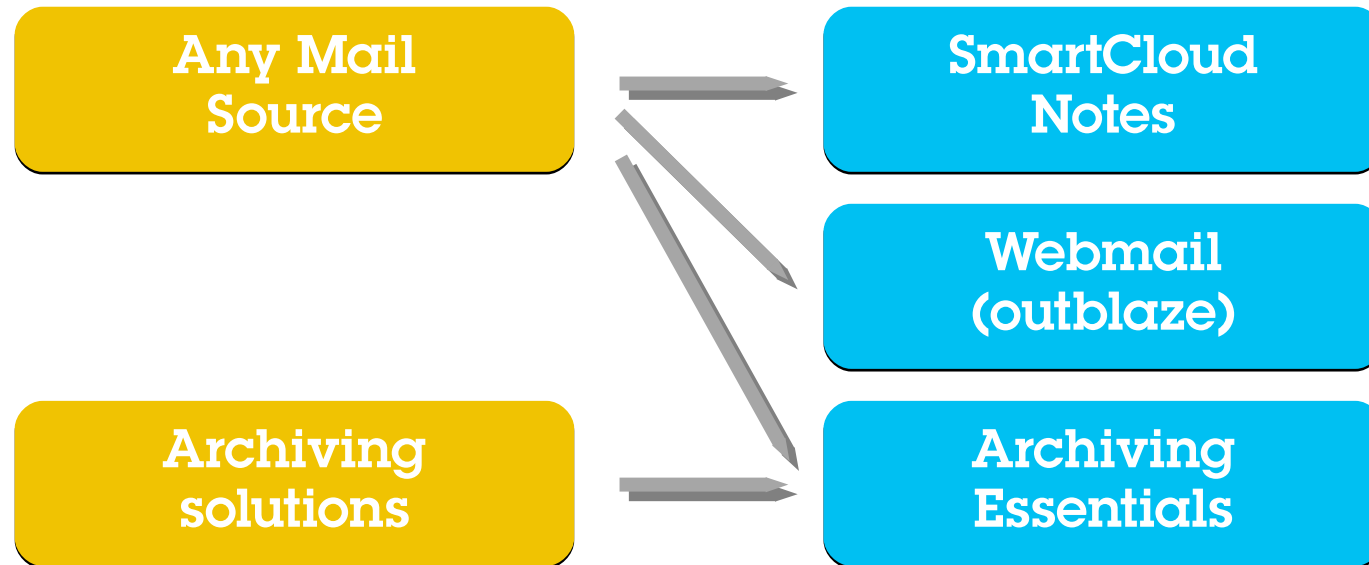
■ Messaging Migrations

- Choices
- Migrate on your own
- Migrate with IBM or Business Partner

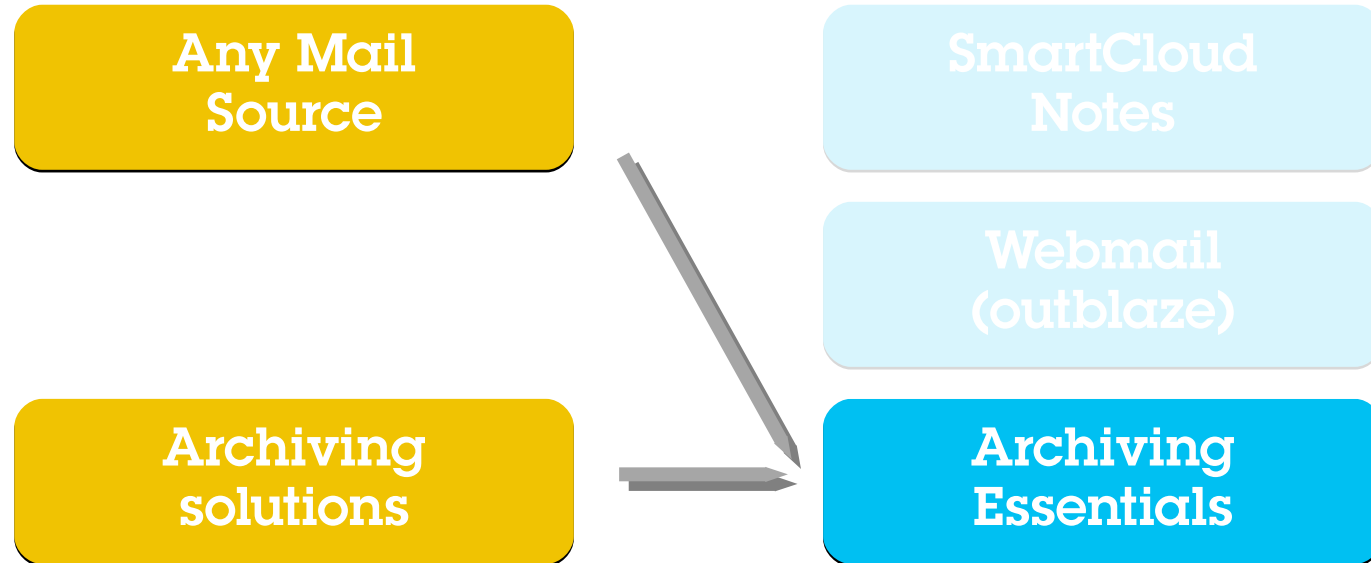
■ Why don't you migrate your data in 2015?



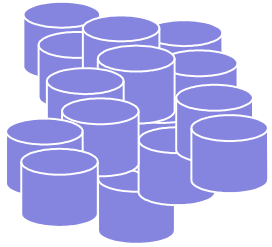
IBM Connections Cloud - offerings & migration paths



IBM Connections Cloud - offerings & migration path



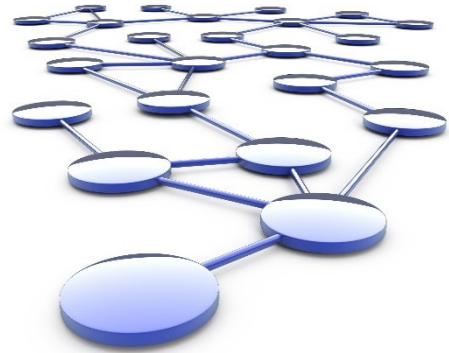
Archive migrations



NSF PST ..



10\$ per GB @Sonian



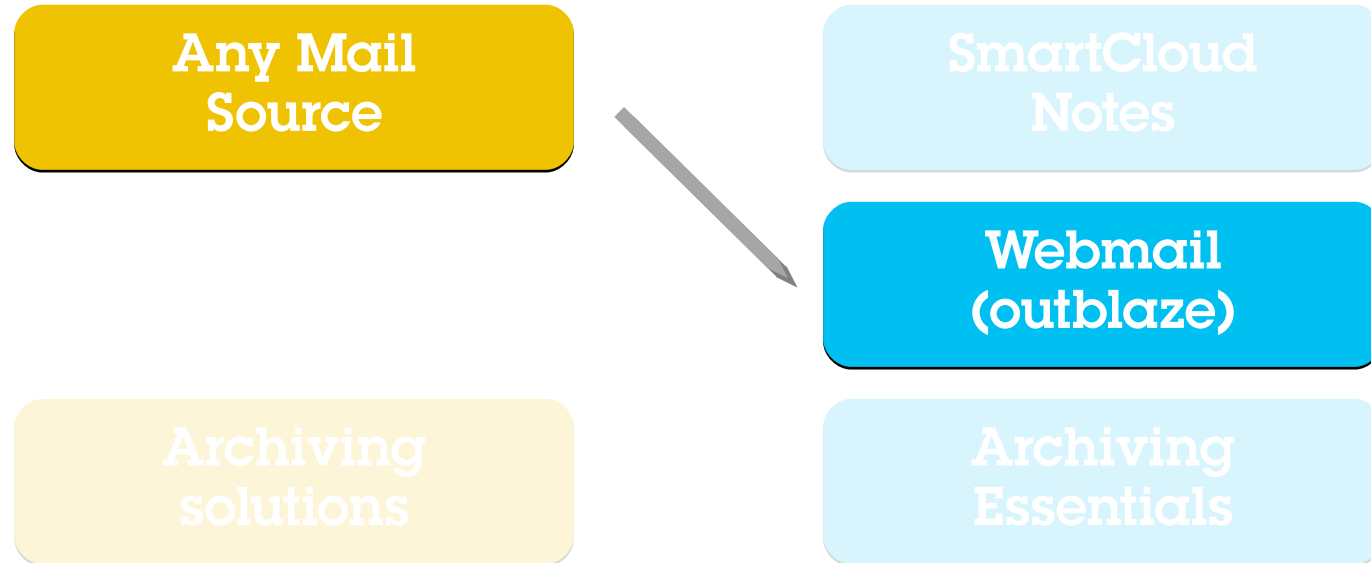
Portable Storage



Connections Cloud Archiving Essentials

- Compliance -

IBM Connections Cloud - offerings & migration path



Today: Webmail migration options

Webmail (outblaze)

- **Essential** webmail with 25 GB of storage, **POP3, IMAP4**, and Authenticated SMTP
- Ability to access email through Apple iPhone, Apple iPad, Blackberry, Windows Mobile, Google Android and Nokia Symbian mobile devices with auto-updates via IMAP IDLE
- SSL encryption, secure password recovery
- Personal and company-level address book for storing contacts with type-ahead searching and addressing
- Private and shared personal calendars with RSVP tracking
- Free/busy lookups when scheduling meetings with colleagues
- Mail forwarding and filtering
- Administrative tools to manage user accounts and global settings
- Built-in spam and virus protection
- Available in 22 languages



Migration options

- The “iMigration”
- (Automated)Business Partner Solutions

Today: Business partner migration options

Webmail (outblaze)

Transend

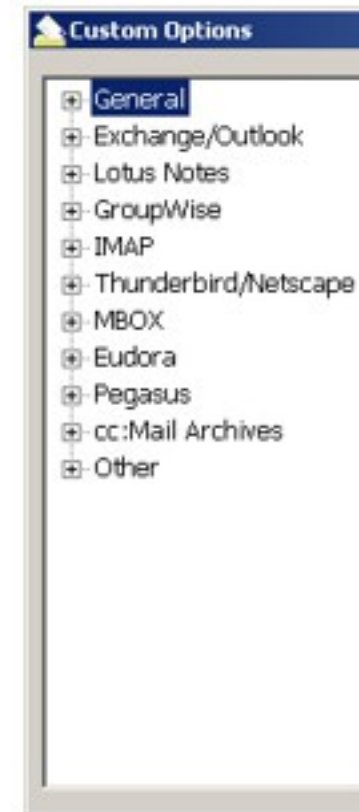


Converts Email Data to SmartCloud iNotes

Messages/Folders • Attachments • Archives • Address Books • Calendars

Transend Migrator for SmartCloud iNotes is an easy to install and use Windows utility for converting email data from leading edge email systems and clients, (Microsoft Outlook/Exchange, IBM Lotus Notes/Domino, Novell GroupWise, IMAP Servers) to SmartCloud iNotes. One user interface allows end users and technicians to convert thousands of accounts at once in batch mode from a central location. For those who prefer, Transend Migrator also supports batch mode migration via command line.

- Transend/IBM Partnership provides customers with fixed, discounted pricing
- \$3.60/user mailbox (includes Support & Maintenance)



Today: Business partner migration options

Webmail (outblaze)



HOME > PRODUCT > JUMPTOCLOUD APP - INOTES

1. JumpToCloud App for SmartCloud iNotes



JumpToCloud App - iNotes

Brand: JumpToCloud

Compatible with: IBM SmartCloud iNotes

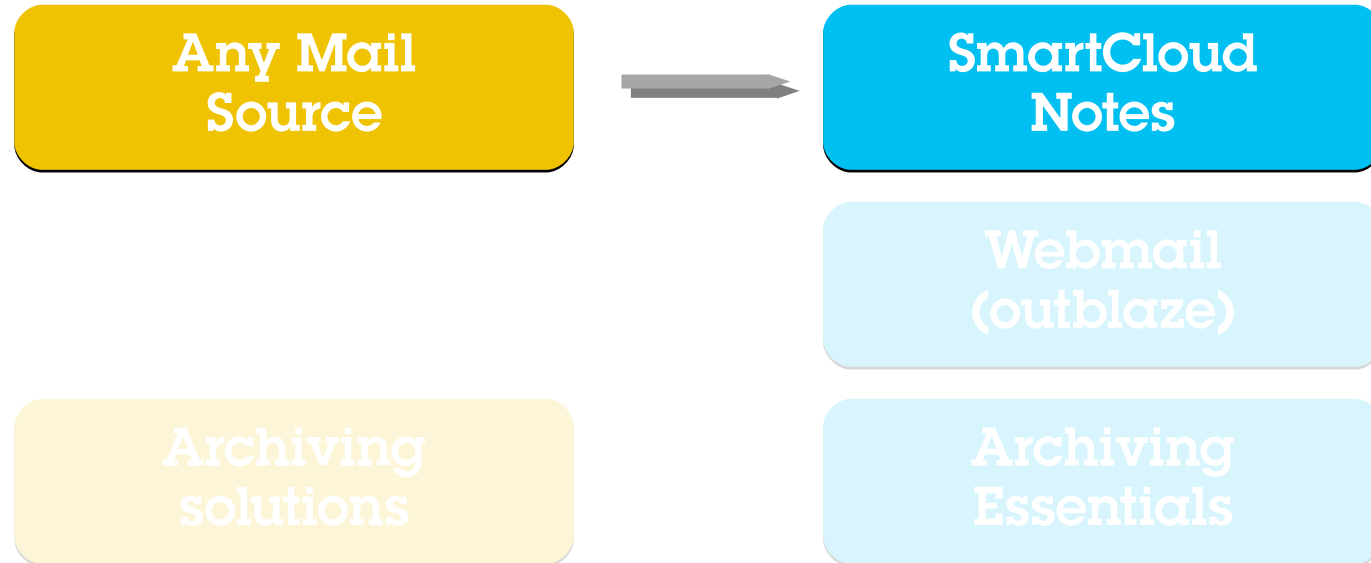


Ranges of Values

- 1 a 1000 users - \$ 2.75/user/unique
- 1001 a 5000 users - \$ 2.47/user/unique
- 5001 a 100000 users - \$ 2.33/user/unique

This application allows the migration of emails, calendar and tasks from any email solution (ex.: IBM Lotus, MS Exchange, Gmail, Office 365, Qmail, Zimbra and others) to the cloud.

IBM Connections Cloud - offerings & migration path



Today: Notes Mail migration options

SmartCloud Notes

- Provides **full-featured email, calendaring, contact management and instant messaging** via a web browser or Notes client
- Lets you access your email on-the-go from mobile devices
- Integrates with existing on-premise infrastructure and applications with hybrid capabilities
- Includes robust security features and built-in virus and spam protection
- Helps control costs with predictable pricing models often for less than an in-house solution
- Helps reduce capital expenditures with little to no up front investment



Migration options

- The iMigration
- (Automated)Business Partner Solutions (IMAP)
- **Free, Fresh Start (IBM)**
- Advanced IBM Migration tooling for large scale projects

Notes
CTRL-C



CTRL-V
Or IMAP

Migration options for SCN



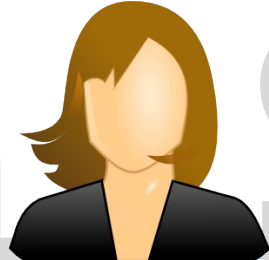
SmartCloud Notes

IBM Fresh Start Tool

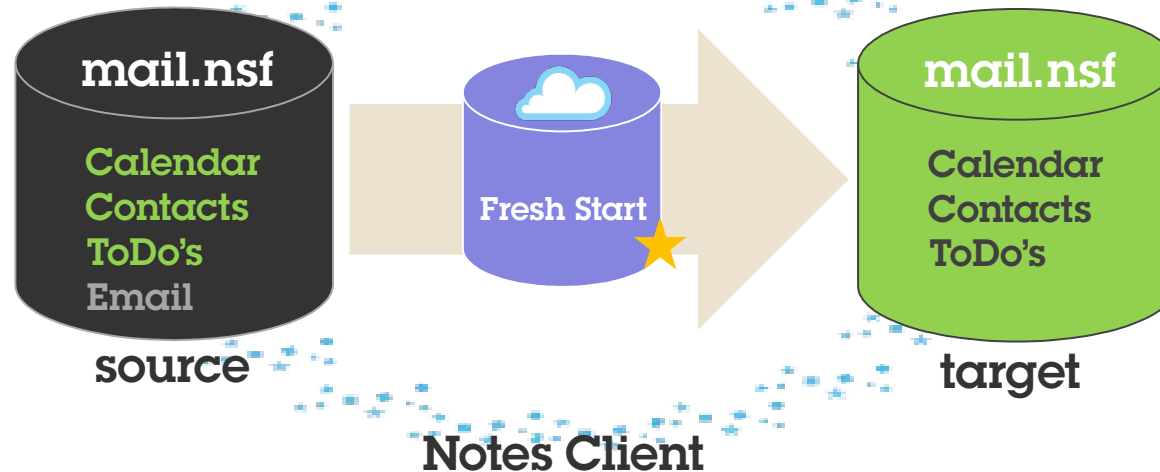
Notes
Semi
Automated



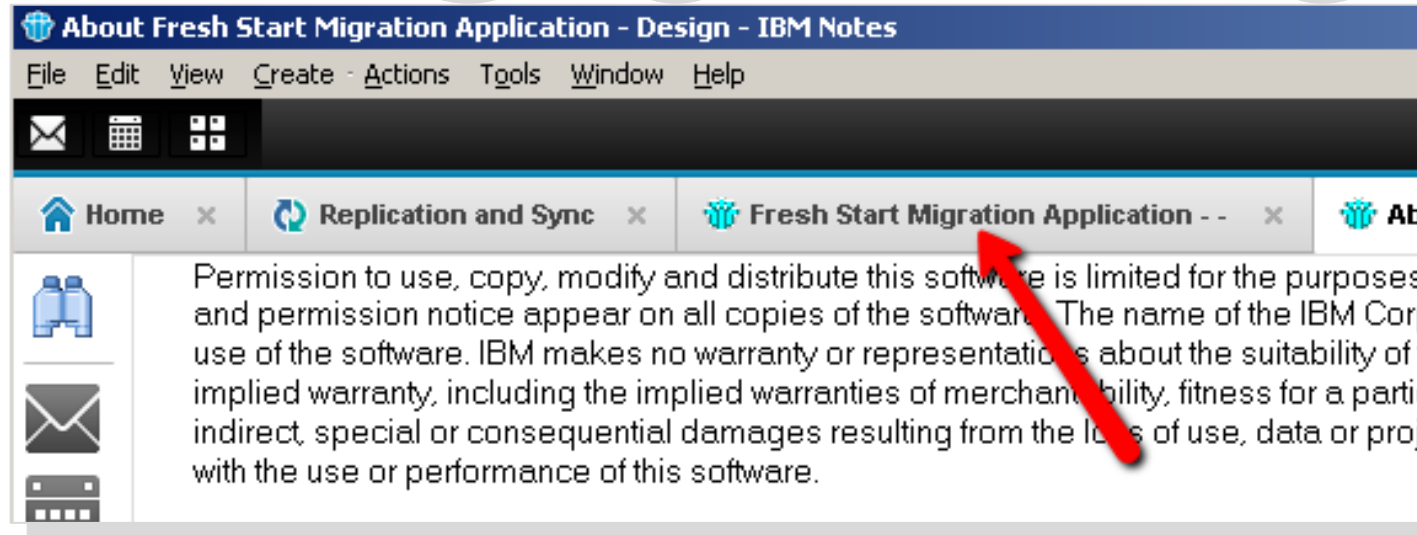
Fresh Start



A Notes Client NSF
Tool that requires an
IBM contract with ISSC
stating 0\$



Fresh Start



IBM Fresh Start Migration Application

Welcome, the purpose of this application is to copy Calendar entries, Personal Contacts and To Do's for a pre-SmartCloud Notes Mail file to a users SmartCloud mail file.

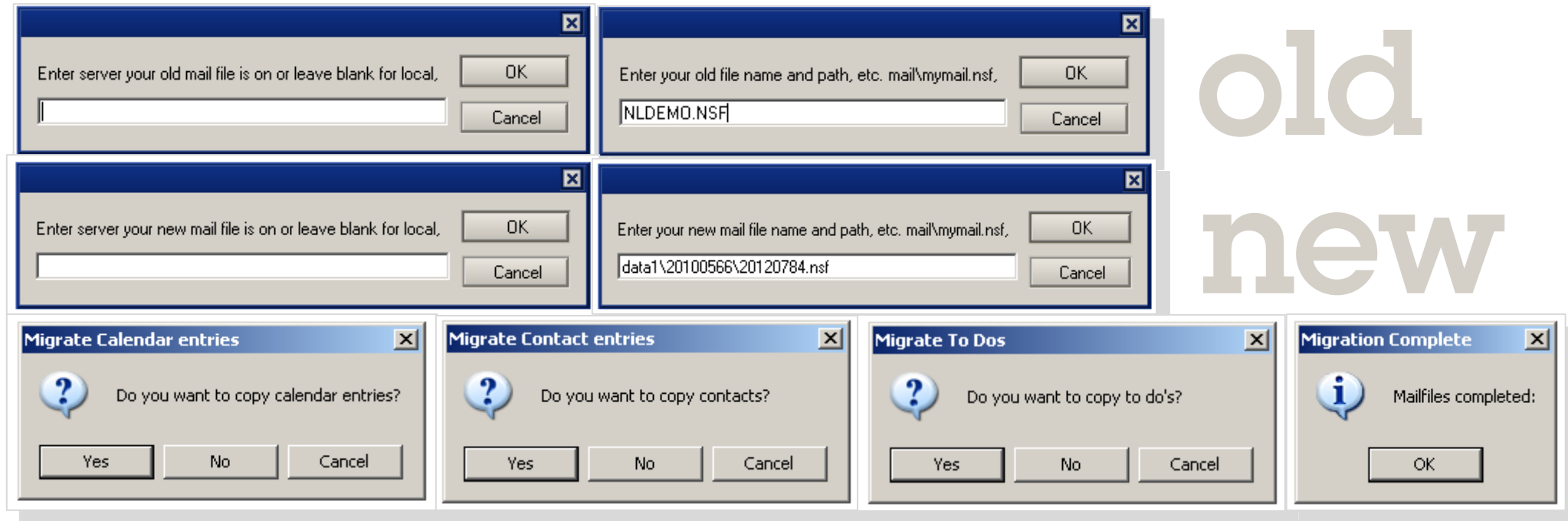
The application can be used by an individual user to move their own content or by an Administrator to move the content for a multiple users at a time.

Move your own content:



Fresh Start

old
new



Fresh

Start

October 28 - November 3, 2013

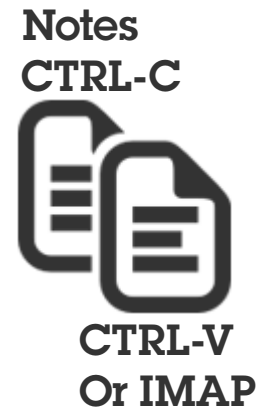
	28 Mon Oct 2013	29 Tue Oct 2013	30 Wed Oct 2013	31 Thu Oct 2013	1 Fri Nov 2013
9:00 am	<input type="checkbox"/> Weekly ICS CTP Benelux				
10:00					
11:00					
12:00 pm	<input checked="" type="checkbox"/> Start ISSC SmartCloud overdracht				
1:00	<input checked="" type="checkbox"/> Sales Meeting ICS IBM HDK Kamer E-05				
2:00				<input checked="" type="checkbox"/> IBM SC4SB: Switchboard Calls /04	
3:00					
4:00		<input checked="" type="checkbox"/> Sametime 9 for ISSC - Solutions			
5:00					



Today: Notes Mail migration options

SmartCloud Notes

- Provides **full-featured email, calendaring, contact management and instant messaging** via a web browser or Notes client
- Lets you access your email on-the-go from mobile devices
- Integrates with existing on-premise infrastructure and applications with hybrid capabilities
- Includes robust security features and built-in virus and spam protection
- Helps control costs with predictable pricing models often for less than an in-house solution
- Helps reduce capital expenditures with little to no up front investment



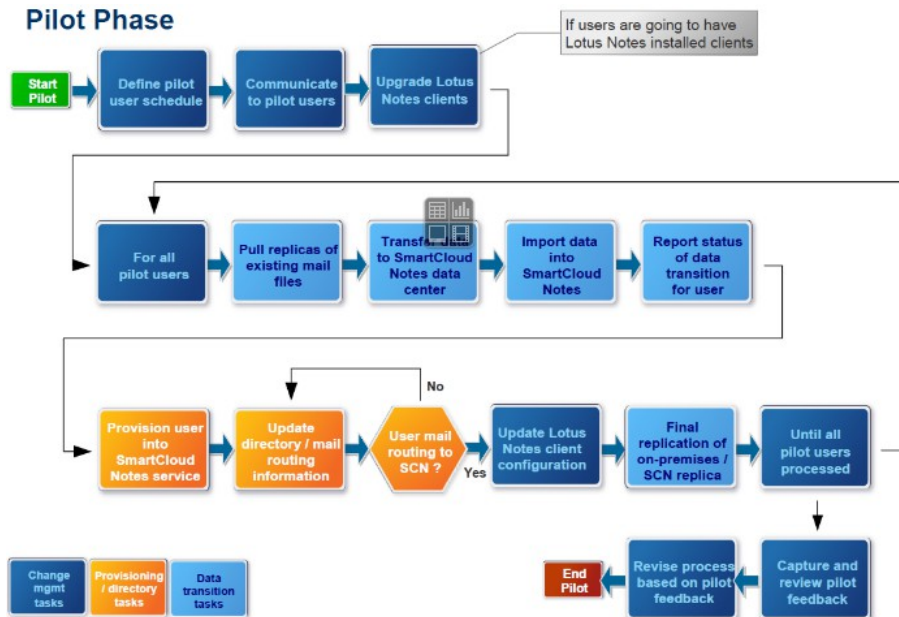
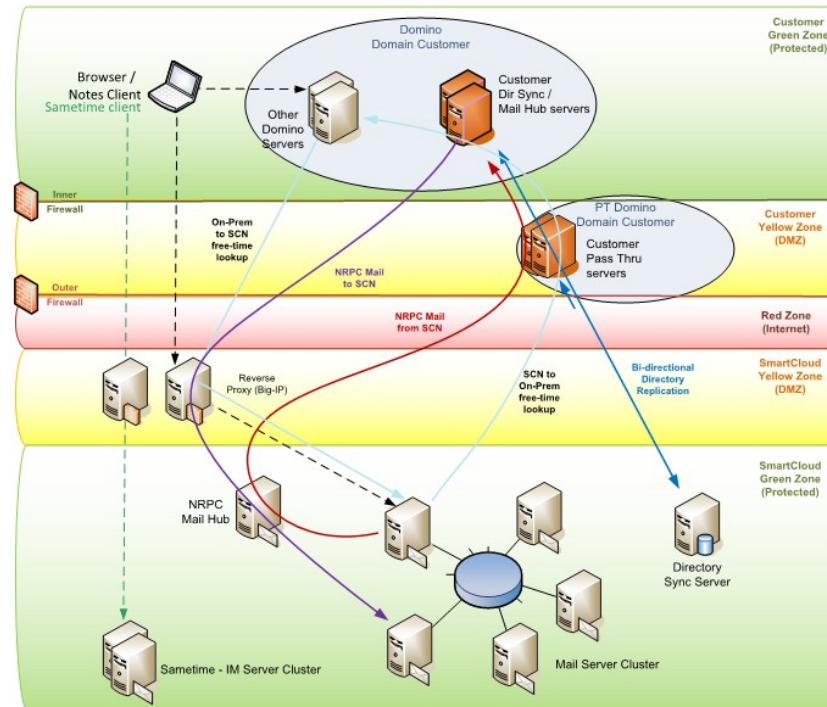
Migration options

- The iMigration
- (Automated)Business Partner Solutions (IMAP)
- Free, Fresh Start (IBM)
- **Advanced IBM Migration tooling for large scale projects**



SmartCloud Notes – Jump Start Pilot

- Typically 20-50 users
- Setup SCN Hybrid Configuration
- Setup staging server
- Setup onboarding tooling
- Migration & Provisioning



SmartCloud Notes – Migration Process

1

**Plan &
check**

2

**Stage &
transfer**

3

**Subscribe &
activate**



OPT

Onboarding **Planning** Tool

- Define standards
- Run Analysis
- Resolve basics
- Create batches
- Manage batches
- View summaries

OTT

Onboarding **Transition** Tool

- Stage batches
- 1st data Quality check
- Unread mark sync
- Encrypt data
- Transport data
- Catch-up sync

AdminUI

SmartCloud Import Site

- Import data
- 2nd Data Quality check
- Select subscription
- Select template
- Set temp password
- Select(ive) mailbox & account to provision

SCN Onboarding – IBM Tooling

The screenshot shows the IBM Onboarding Planning Tool interface. At the top, there is a menu bar with 'File', 'Edit', 'View', 'Create', 'Actions', 'Tools', 'Window', and 'Help'. Below the menu bar is a toolbar with icons for home, calendar, and a window titled 'Onboarding Planning Tool - Control ...'. The main interface is divided into a left sidebar and a main content area. The sidebar contains a navigation menu with categories: 'Setup' (Global Settings, Group Definitions, Batch Definitions, Provisioning Profiles), 'Collect Information' (Scan Mail), 'Resolve Issues' (Users By Errors/Warnings, Users By Warnings, Users By Acknowledged Warnin, Errors/Warnings By User, Client Usage), 'Assign Users To Batches' (Unbatched All, Unbatched No Errors/Warnings, Batched All, Batched By Transition State), and 'Manage Batches' (Batches By Transition State, Batches By Domain). At the bottom of the sidebar is a circular logo with 'OPT' and three arrows. The main content area has a table header with columns 'Name', 'Description', and 'Members'. The table body is currently empty.



SCN Onboarding – IBM Tooling

File Edit View Create Actions Text Tools Window Help

Home x Onboarding Transition Tool x

IBM SmartCloud Notes
Onboarding Transition Tool
Version 2.0.02 (15 JUL 2014)

Dashboard
Current Batch: Refresh

Transfer Steps Check here to manually process users

Transfer Steps	Ready	Errors
1 User Profiles Created	0	0
2 Replication in progress	0	0
3 Replication complete	0	0
4 Encryption Started	0	0
5 Encryption Complete	0	0
6 User Provisioned	0	0
7 Active User	0	0
8 Purge On-Premises Mail	0	0
9 Pending On-Premises Delete	0	0
10 Complete	0	0
Totals	0	0

User Profiles
Total User Profiles: 0

Summary Information
Control Number
Staging Server Data Size: 0 bytes

Import Batch

- Dashboard
- Batches
- Users
- Incoming Mail
- Administration
- Reference
- Links

OTT



SmartCloud Notes – How does it look for the user?

The User Experience



<http://www.youtube.com/watch?v=dNEk3wG89JA>

SmartCloud Notes - Onboarding overview

0

Data On-Premises → **Provision Empty**

- No migration costs
- Keep data where it is today
- (Bulk) create new mail accounts
- Option to deploy SCN in Hybrid config

Transition to the Cloud

Preferences?
Why not combine?



1

Data On-Premises → **A** NRPC Copy paste
→ **B** Any IMAP Client
→ **C** Calendar Contacts ToDo's

- A**
 - Requires effort
 - No tooling
 - Copy what you think is important
 - Notes client
- B**
 - No migration costs
 - No tooling
 - Requires effort
 - Mail only
- C**
 - Requires effort & Notes Client
 - Migrate Calendar, Contacts & ToDo's in an easy way
 - IBM Services tool

Free tooling

2

Data On-Premises → **A** Archiving Essentials
→ **B** On-Premises Archiving
→ **C** Softlayer Cloud

- A**
 - Requires Subscriptions
 - Migration ~10\$/GB
- B**
 - No migration costs
 - Requires licenses & administration
 - Hardware costs
- C**
 - No migration costs
 - Requires Licenses & Administration
 - Flexible hosting

Archive your data

3

Data On-Premises → **A** Jump To Cloud
→ **B** 'Jump Start' Pilot
→ **C** 'White glove' Customized Project

- A**
 - Requires effort From Administrator
 - Per account pricing
 - Migrate from multiple sources
- B**
 - 50 user Pilot IBM migration project
 - Incl. Hybrid Environment, Staging env. & IBM advanced tooling
- C**
 - Full data migration
 - Or subset of Mail, Calendar, Contacts, ToDo's. Incl. Hybrid
 - Certified staff

Software/Services solutions



SmartCloud Notes - Onboarding sample combinations

1

Archiving Essentials FULL data migration

- Full Data migration to Archiving Ess.
- Full Data migration to Notes on Cloud
- Switch to MailNext
- Use MailNext Mobile app
- Social Business Adoption Services



Group 1 – Management Board

2

Archiving Essentials FULL data migration

- Full Data migration to Archiving Ess
- 3 Year data to Notes on Cloud (USB)
- Upgrade to Notes Version 9.0.2
- Configure Mobile Device(s)
- Social Business Adoption Services
- Install Video Camera for A/V meetings



Group 2 – Sales

3

'Jump Start' Pilot FULL data migration On-Premises Archiving

- Archive on-premises
- 90 days data on Cloud
- Pilot group (FTP transfer)
- Configure Mobile Device(s)
- Install Connections Desktop plugin



Group 3 – Head office staff

4

'Fresh Start' Copy paste

- Fresh start self service migration on req.
- Optionally, copy some emails
- Keep Notes 8.5 client until migration completes, then use browser only



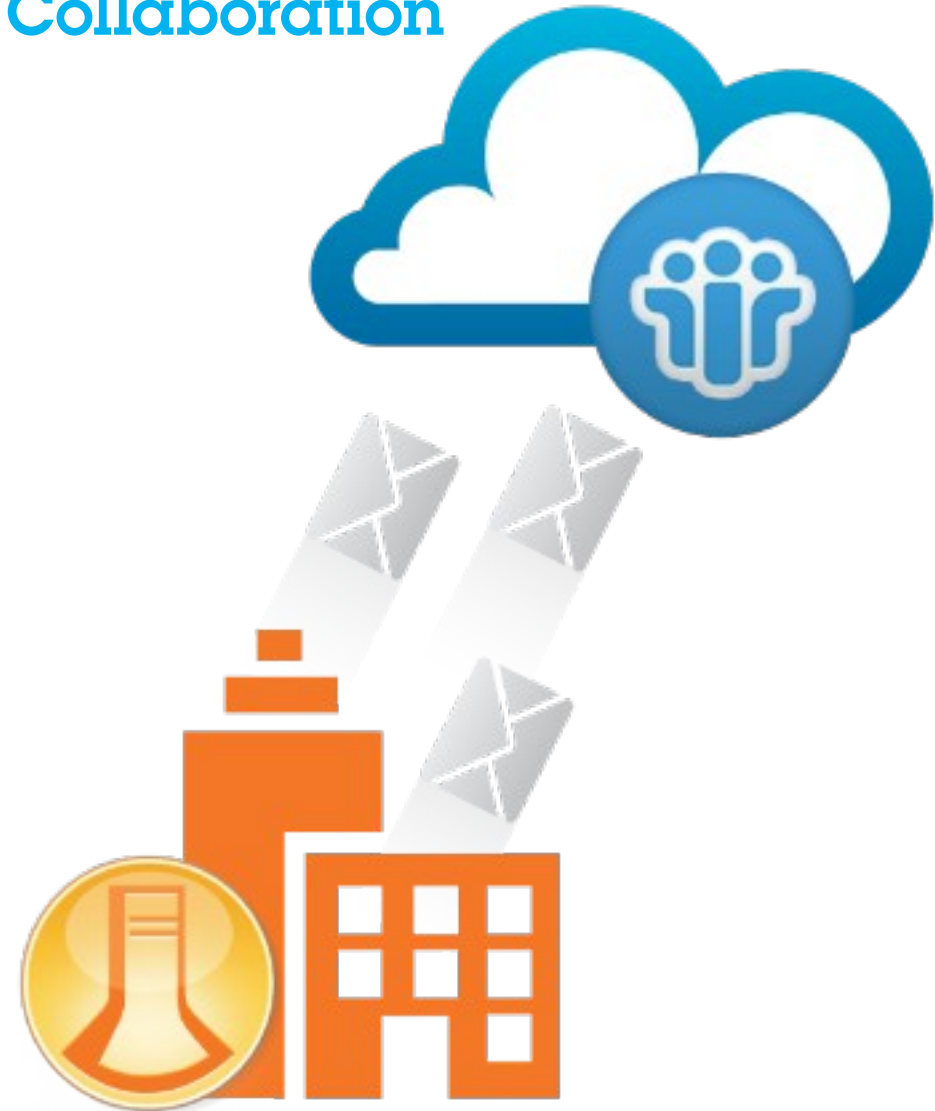
Group 4 – Blue collar workers

IBM SmartCloud Notes Hybrid Mail Servers in the Cloud

Offerings from IBM Software Services for Collaboration

Fast, Easy Setup

- Based on SoftLayer Infrastructure as a Service
- No lead time
- No hardware to procure
- Immediate setup (4 hours)
- Every setup is a template image
- Rapid, inexpensive pilots
- Staging environments, Dir Sync – Mail Hubs



Agenda

- Messaging Migrations
 - Choices
 - Migrate on your own
 - Migrate with IBM or Business Partner
- Why don't you migrate your data in 2015?



SmartCloud Notes - Migration tooling

FUTURE


Migrate your own data in 2015?



IBM Account Onboarding Manager

Email address:

Password:





*Future is a direction! Designs can and will change without notice, timelines can expand



Users



Settings



Staging



Complete



Search Users/Groups/Settings

Staging Activity Today 10/22/14, 2:57 PM

7 Errors

Recent User Groups

Ready to Transfer

Pre-transfer Instructions

Transfer Status

Ready to Provision

Provisioning Status

Post-provision Instructions

Active

1 Xu Hong 15



N/A

Pass: 0
Fail: 1

2 Xu Hong 11



N/A

Pass: 2
Fail: 0

1 GVT



N/A

Pass: 0
Fail: 1

1 Xu Hong



N/A

Pass: 0
Fail: 1

1 test02



N/A

Pass: 0
Fail: 1

Overall Organization Activity



Users

Users who are grouped and waiting to have their mail transferred.



Staging

Users in groups being mail transferred and provisioned.



Complete

Users who are now in the cloud with subscriptions and settings applied.

5 Groups Transferring



User Data

[Total Users | 36350](#)

Subscription Status

1866 of 2339 available licenses



Resync

10/16/14, 9:32 PM

What do I need to do to get started?



Available U... ▾

36341 Users

Domains ▾

All Servers ▾

All Org Units ▾

<input type="checkbox"/>	NAME	INTERNET NAME	SERVER	DOMAIN	STATUS	GROUP	ORG	
<input type="checkbox"/>	أبت , أبت	chencuitest4@dirhub.scn.cn.ibm.com	dirhub/obt	Westlake	Available		OBT	⌵
<input type="checkbox"/>	glider2 , zrui	zruiglider2@dirhub.scn.cn.ibm.com	dirhub/obt	Westlake	Available	test3	OBT	⌵
<input type="checkbox"/>	dc9 , superman	supermandc9@dirhub.scn.cn.ibm.com	dirhub/obt	Westlake	Available		OBT	⌵
<input type="checkbox"/>	dc5 , superman	supermandc5@dirhub.scn.cn.ibm.com	dirhub/obt	Westlake	Available		OBT	⌵
<input type="checkbox"/>	dc1 , superman	supermandc1@dirhub.scn.cn.ibm.com	dirhub/obt	Westlake	Available	test2	OBT	⌵
<input type="checkbox"/>	TVT , o	oTVT@dirhub.scn.cn.ibm.com	dirhub/obt	Westlake	Available		OBT	⌵
<input type="checkbox"/>	أبت , chen test03	chentest03@dirhub.scn.cn.ibm.com	dirhub/obt	Westlake	Available		OBT	⌵
<input type="checkbox"/>	h13 , xu	xuh13@dirhub.scn.cn.ibm.com	dirhub/obt	Westlake	Available		OBT	⌵
<input type="checkbox"/>	h17 , xu	xuh17@dirhub.scn.cn.ibm.com	dirhub/obt	Westlake	Available		OBT	⌵
<input type="checkbox"/>	耘 , 啊☆ €西 ۰۰۰۰ 期		dirhub/obt	Westlake	Available		OBT	⌵
<input type="checkbox"/>	7۰۰test01 , chen	chentest01@dirhub.scn.cn.ibm.com	dirhub/obt	Westlake	Available		OBT	⌵
<input type="checkbox"/>	v۰۰۰14060 611170822 2 , 6aü	GVT140606111708222@dirhub.scn.cn.ibm.com	dirhub/obt	Westlake	Available		OBT	⌵



Create New Transfer Group

Drag names or click to create a new group.

CSV

Create New Transfer Group from CSV

Drop CSV file [Download Template](#)

Transfer Groups

Delete

Most Recent ▾

0 test1



1 test2



1 test3





Users



Settings



Staging



Complete



Search Users/Groups/Settings

Saved Settings

How do I create settings for my groups?



Most Recent

Domino setup



New Settings

default kit



9.0
English



partial mail



9.0
English



Transfer Groups

Delete

Most Recent

0 test1



1 test2



1 test3





Users



Settings



Staging



Complete



Search Users/Groups/Settings

Tile View

List View

Staging Area

How do I stage users for transfer and provisioning?



Most Recent



1 Edit ⚠ ℹ

Xu Hong 15

Next step: Fix errors

80%

Error occurred ...

2 Edit ℹ

Xu Hong 11

Next step: None

100%

Completed

1 Edit ⚠ ℹ

GVT

Next step: Fix errors

4%

Error occurred ...

1 Edit ⚠ ℹ

Xu Hong

Next step: Fix errors

4%

Error occurred ...

1 Edit ⚠ ℹ

test02

Next step: Fix errors

4%

Error occurred ...

3 Edit ⚠ ℹ

Test01

Next step: Fix errors

4%

Error occurred ...



Users



Settings



Staging



Complete



Search Users/Groups/Settings

[How do I manage users in the cloud?](#)

NAME	INTERNET NAME	STATUS	GROUP	DATE COMPLETED
h11 , xu	xuh11@dirhub.scn.cn.ibm.com	Complete	Xu Hong 11	10/14/14, 8:44 PM
h14 , xu	xuh14@dirhub.scn.cn.ibm.com	Complete	Xu Hong 11	10/14/14, 8:44 PM

Questions

ibm.biz/CloudRedbookPDF

Grazie

ITALIAN

धन्यवाद

HINDI

Merci

FRENCH

ありがとうございました

JAPANESE

Obrigado

BRAZILIAN PORTUGUESE

多谢

SIMPLIFIED CHINESE

多謝

TRADITIONAL CHINESE

Gracias

SPANISH

Спасибо

RUSSIAN

நன்றி

TAMIL

ขอบคุณ

THAI

Danke

GERMAN

شكراً

ARABIC



Hp Dalen

hp@dk.ibm.com

45-28 80 39 04 M: 45-28 80 39 04

Lyngby, DK IBM Sales & Distribution, Software Sales

Sales Leader Europe, IBM Notes & Domino and Mail Next



Maurice Teeuwe

[more info](#)

m@nl.ibm.com

31-20-513-1433 M: 31-6535 746 19

Amsterdam, NL IBM Sales & Distribution, Software Sales

IBM Connections Cloud - Technical Sales Leader, Europe

Thank

You

Acknowledgements and Disclaimers

Availability. References in this presentation to IBM products, programs, or services do not imply that they will be available in all countries in which IBM operates.

The workshops, sessions and materials have been prepared by IBM or the session speakers and reflect their own views. They are provided for informational purposes only, and are neither intended to, nor shall have the effect of being, legal or other guidance or advice to any participant. While efforts were made to verify the completeness and accuracy of the information contained in this presentation, it is provided AS-IS without warranty of any kind, express or implied. IBM shall not be responsible for any damages arising out of the use of, or otherwise related to, this presentation or any other materials. Nothing contained in this presentation is intended to, nor shall have the effect of, creating any warranties or representations from IBM or its suppliers or licensors, or altering the terms and conditions of the applicable license agreement governing the use of IBM software.

All customer examples described are presented as illustrations of how those customers have used IBM products and the results they may have achieved. Actual environmental costs and performance characteristics may vary by customer. Nothing contained in these materials is intended to, nor shall have the effect of, stating or implying that any activities undertaken by you will result in any specific sales, revenue growth or other results.

© *Copyright IBM Corporation 2014. All rights reserved.*

- ***U.S. Government Users Restricted Rights - Use, duplication or disclosure restricted by GSA ADP Schedule Contract with IBM Corp.***
- IBM, the IBM logo, ibm.com, and Lotus are trademarks or registered trademarks of International Business Machines Corporation in the United States, other countries, or both. If these and other IBM trademarked terms are marked on their first occurrence in this information with a trademark symbol (® or ™), these symbols indicate U.S. registered or common law trademarks owned by IBM at the time this information was published. Such trademarks may also be registered or common law trademarks in other countries. A current list of IBM trademarks is available on the Web at “Copyright and trademark information” at

Other company, product, or service names may be trademarks or service marks of others.

